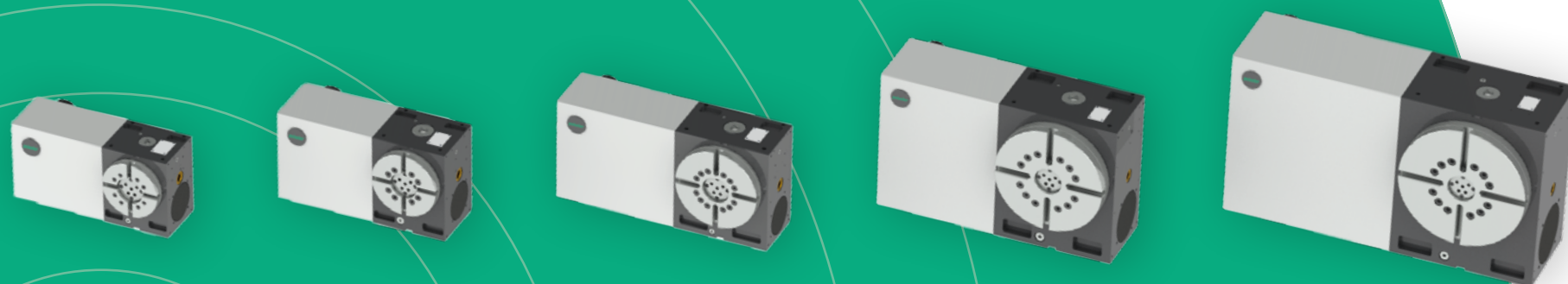


ATC product catalog 2024

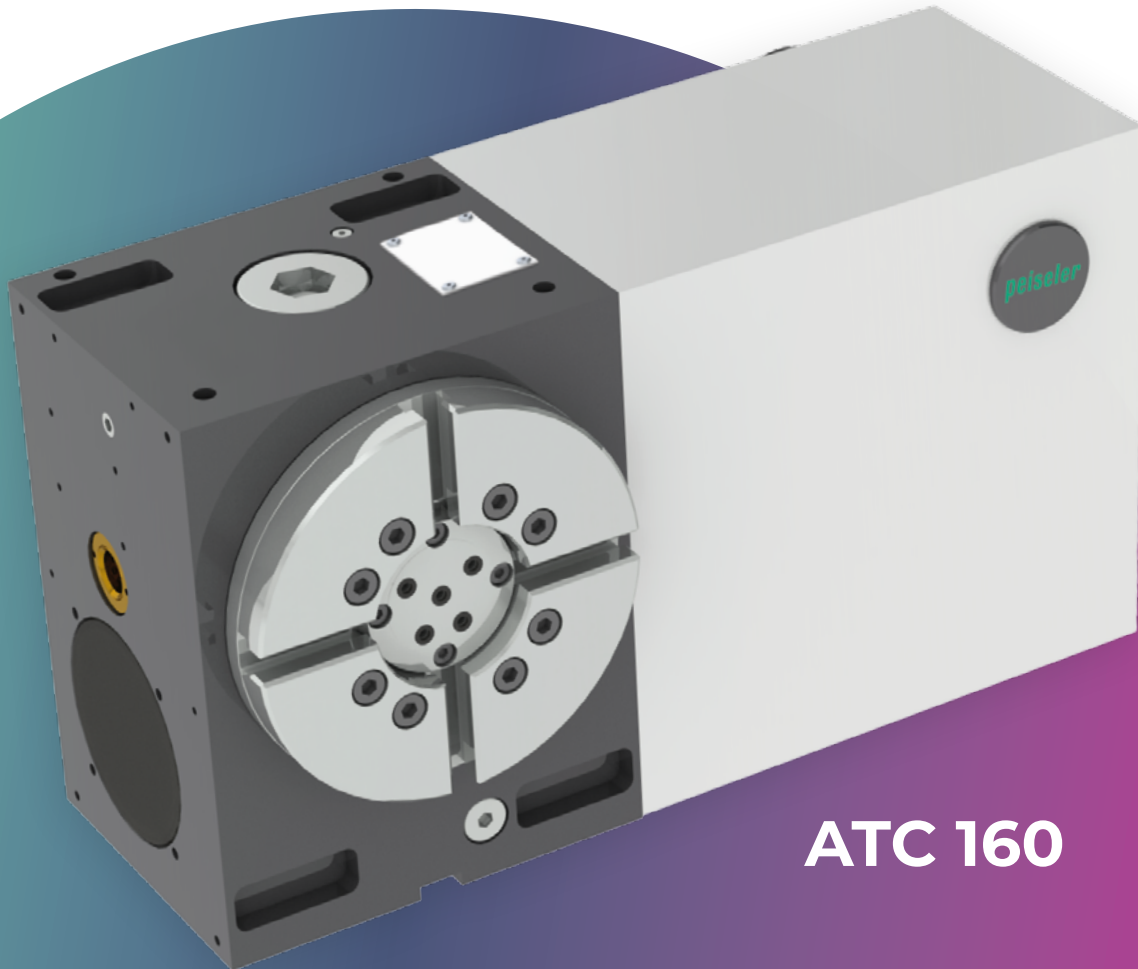
peiseler



Modular precision
for your machines

The ATC series: Our modular retrofit solutions.

Our modular ATC series devices are your smart investment for your machine tools to **maximize production efficiency**. The compact and standardized design allows you to make optimum use of your machine's installation space - **100% plannable and easy to integrate**.

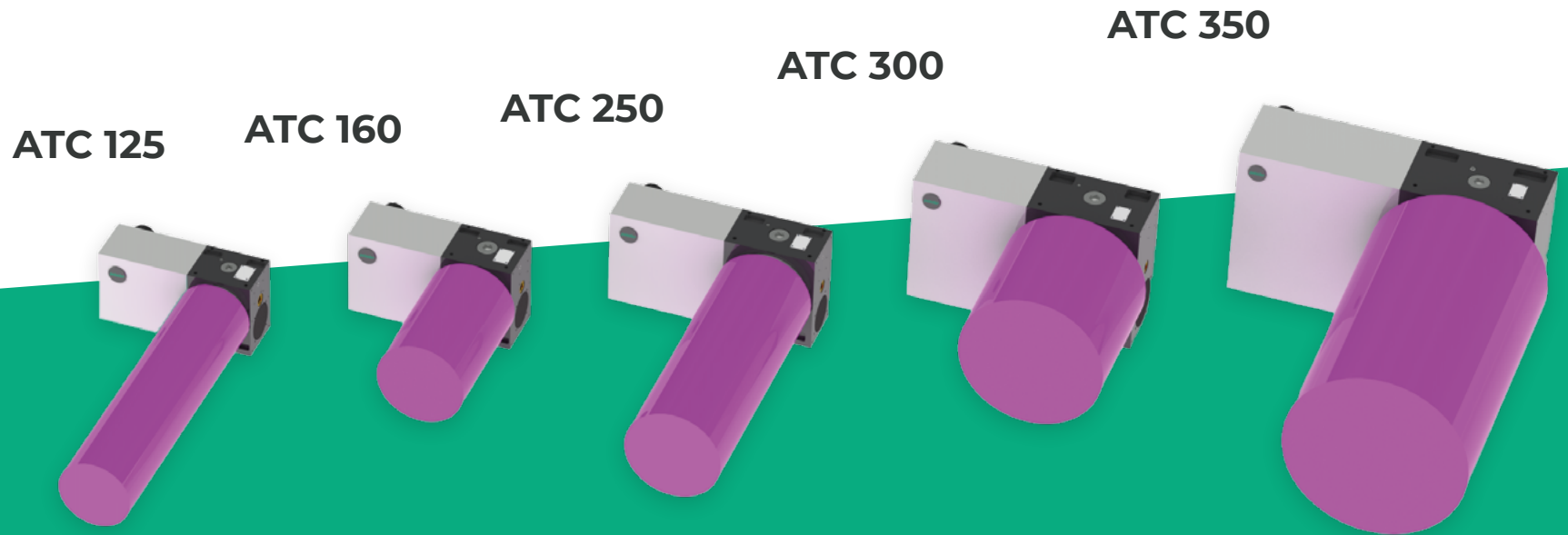


ATC 160

General Keyfacts

- ✓ Designed & made in Germany
- ✓ High cost efficiency
- ✓ Maximum usability of the operational space
- ✓ Low maintenance
- ✓ Maximum service life
- ✓ Full lifetime service

The right solution for your requirements.



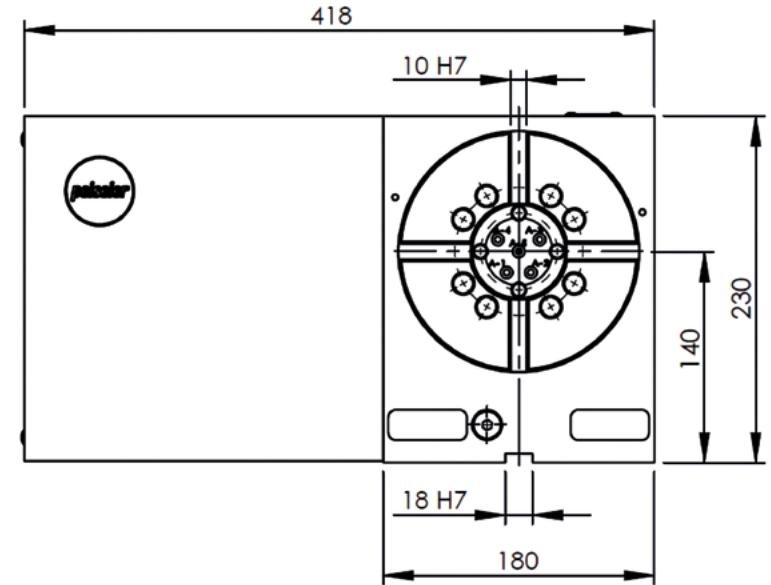
Maximum workpiece dimensions and loads

diameter	180 mm	220 mm	240 mm	360 mm	450 mm
length	720 mm	340 mm	650 mm	350 mm	750 mm
weight	120 kg	160 kg	300 kg	400 kg	600 kg
mass inertia	0,6 kgm ²	1,5 kgm ²	7,5 kgm ²	20 kgm ²	25 kgm ²
resul. tilting moment	400 Nm	1.000 Nm	2.700 Nm	3.200 Nm	5.500 Nm

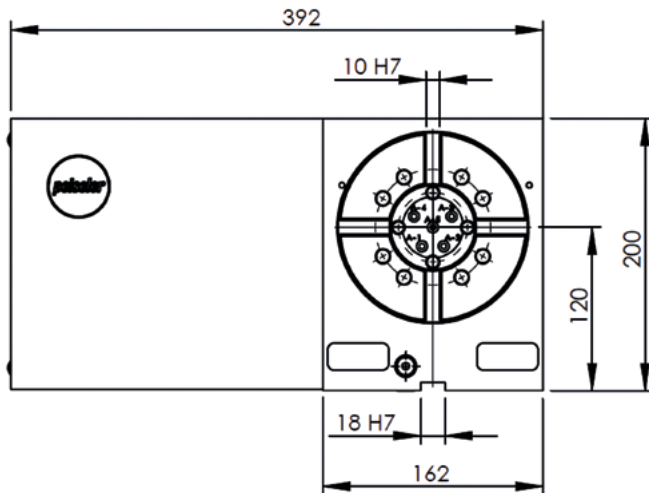
Dimensions in detail.

The working area of a 3-axis machine tool defines the possible range of parts. To increase the range of different workpieces, the volume of the fourth axis is important. The smaller the rotary table - the more space for your workpiece.

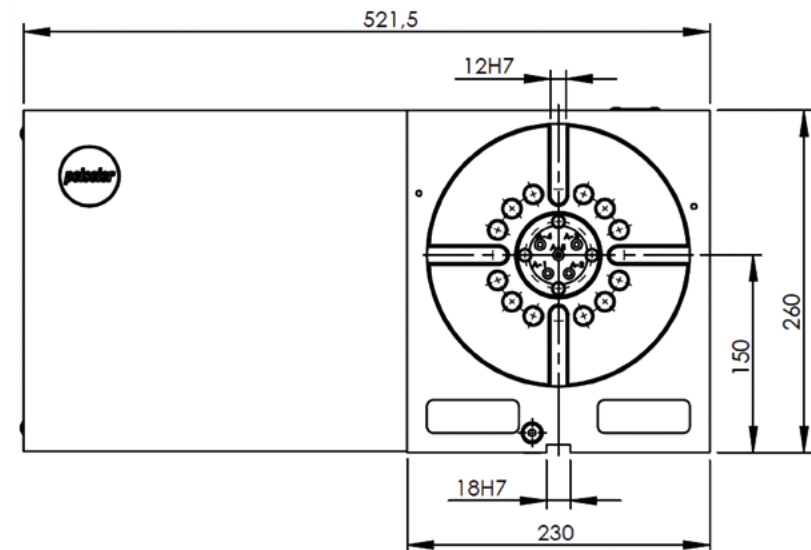
ATC 160



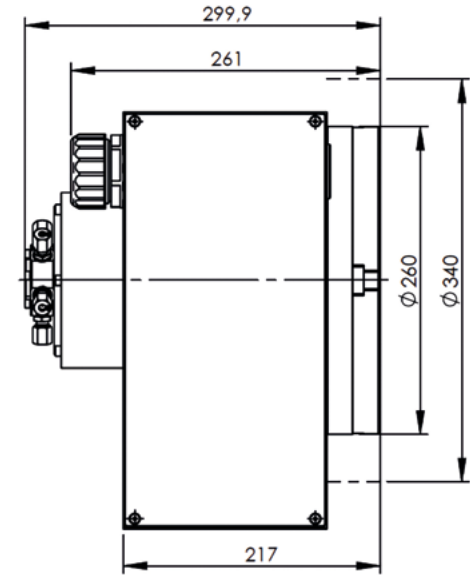
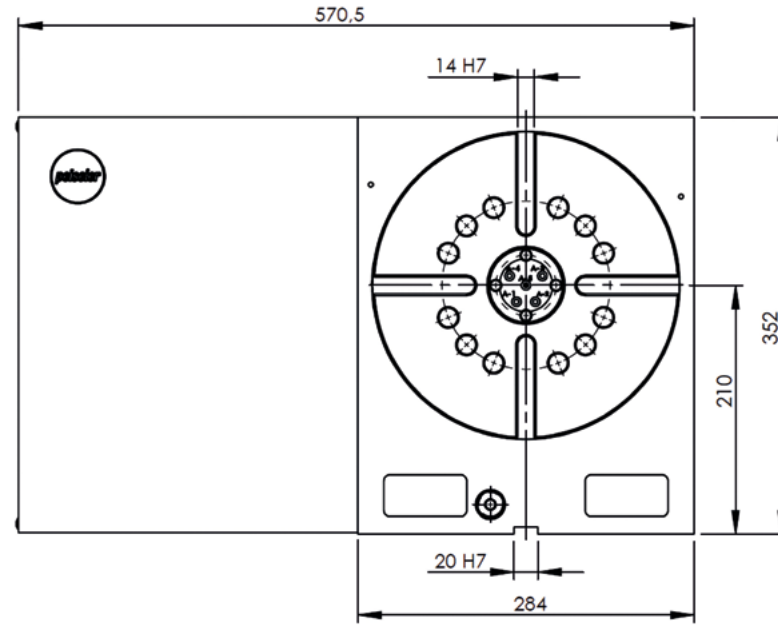
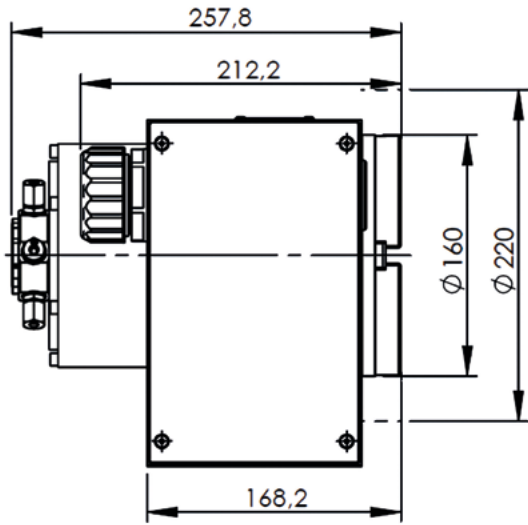
ATC 125



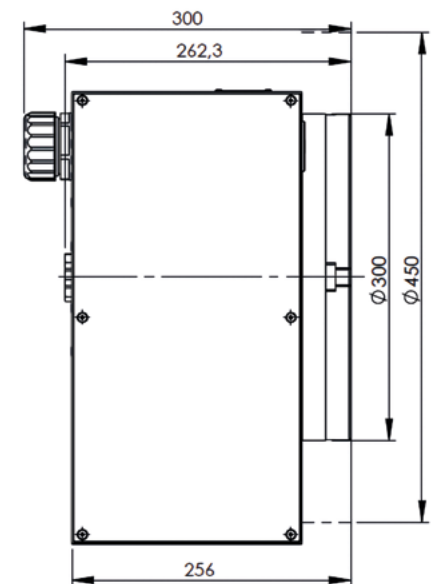
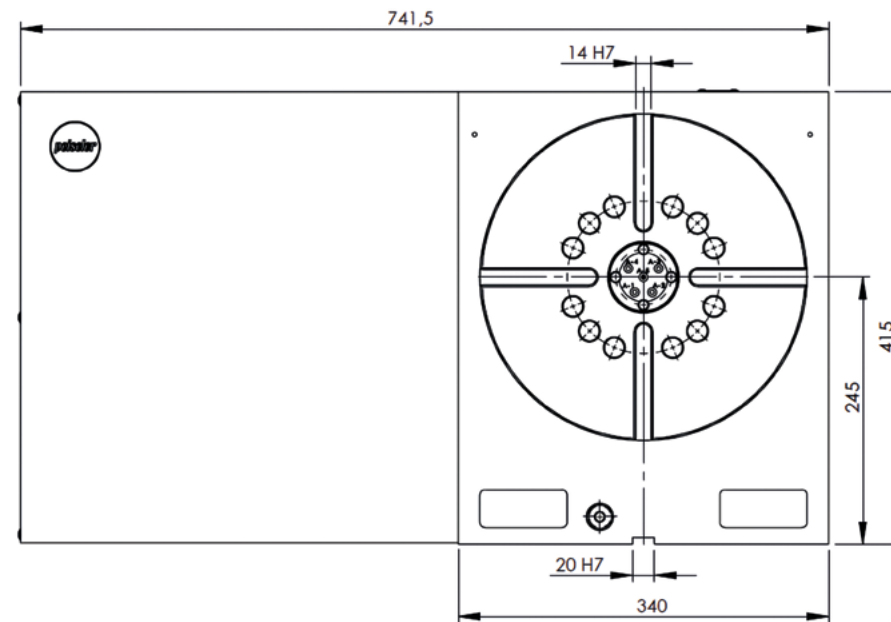
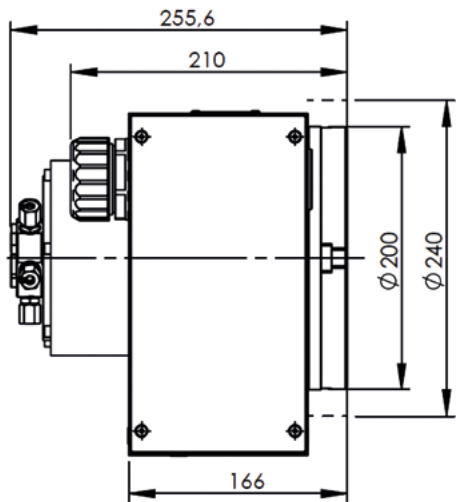
ATC 250



ATC 300



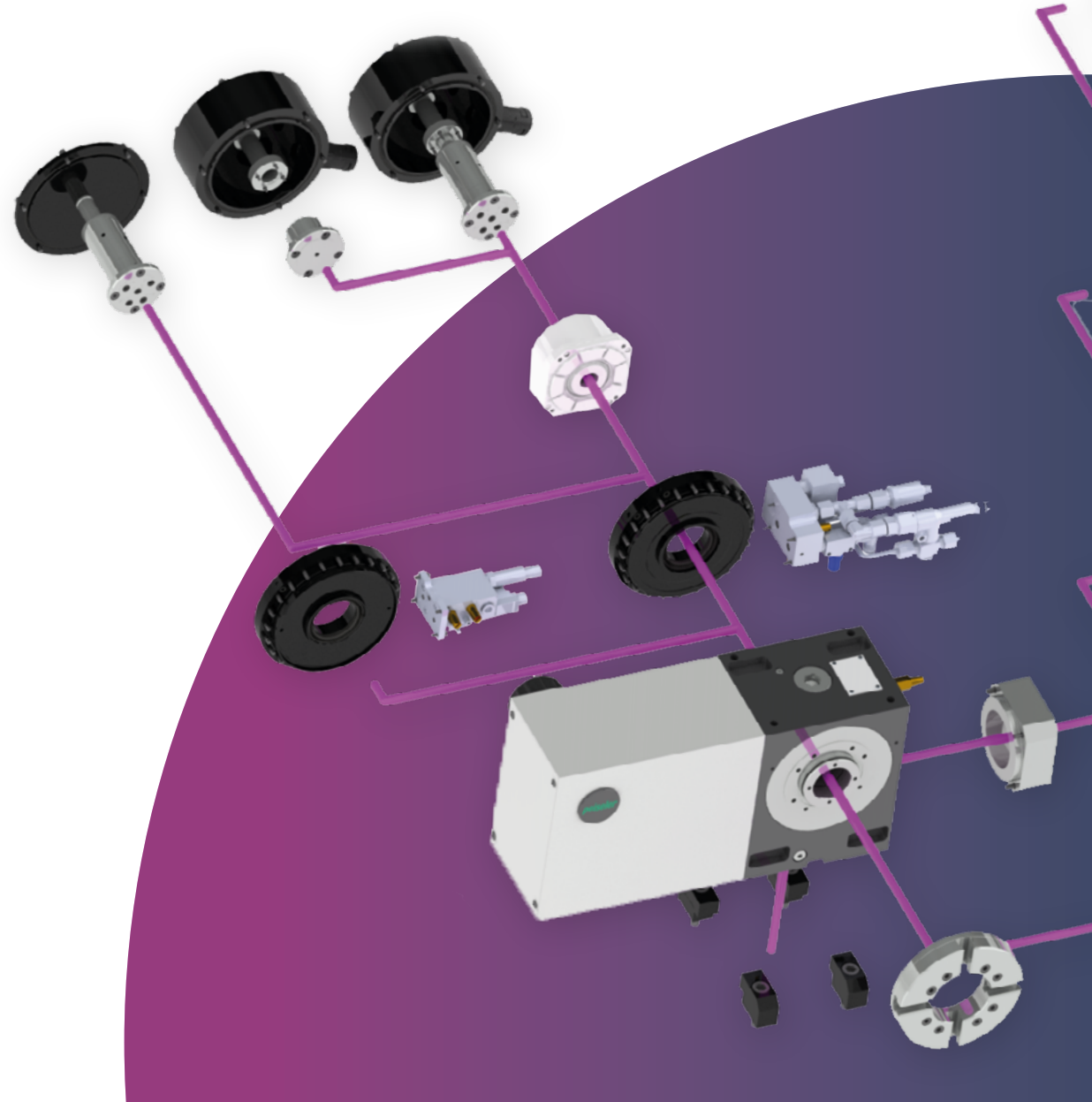
ATC 350

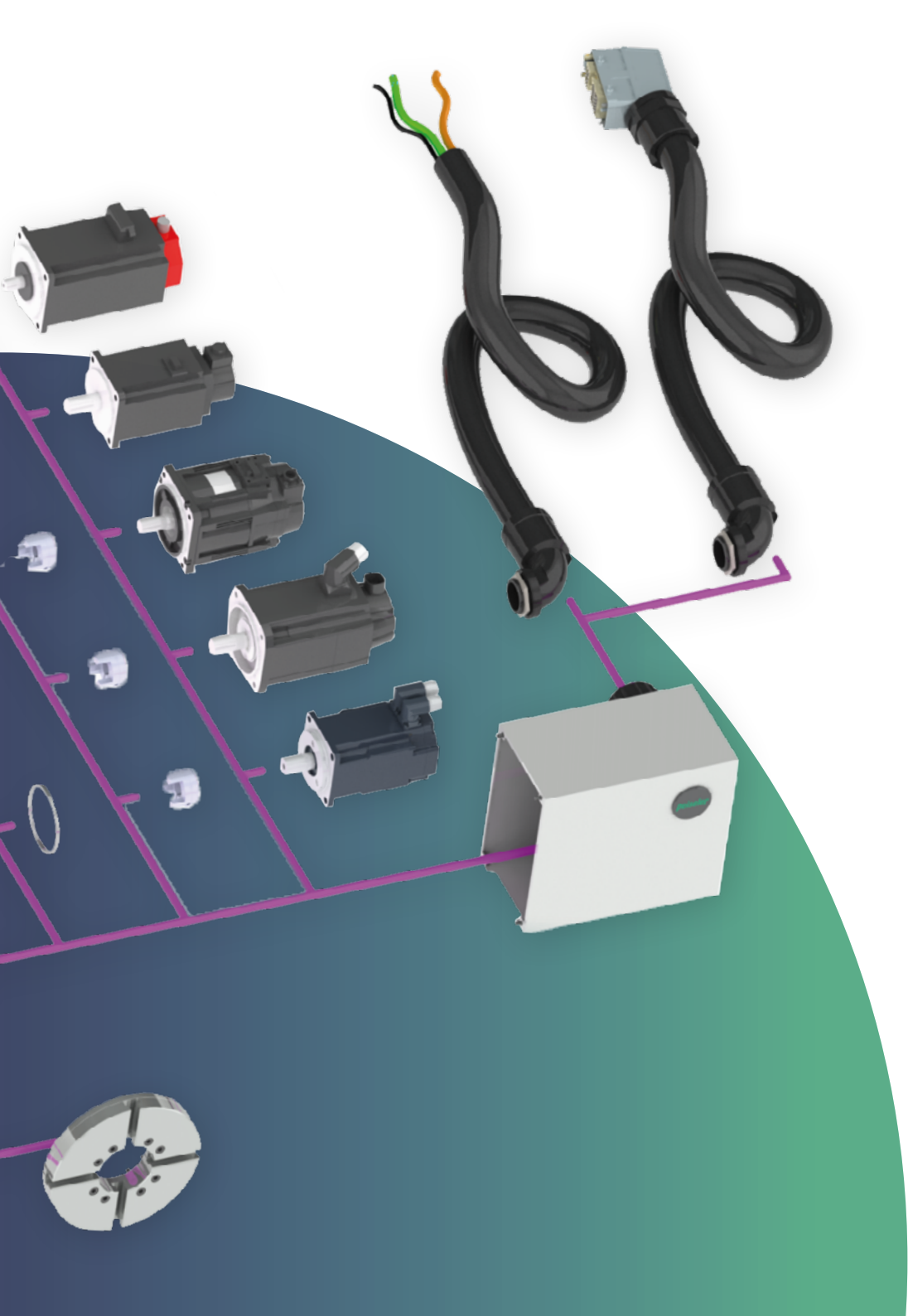


Not just inner values that you can rely on.

Why standardization makes sense:

- + Attractive costs through series production & use of identical parts
- + Short delivery time due to warehousing





What's in store for you:

- ✓ 5 different sizes
- ✓ Compatible with all common controller types
- ✓ Flexible motor mounting (left or right)
- ✓ Pneumatic or hydraulic Peiseler clamping

OPTIONAL with angle measuring system, rotary distributor and cable set (without plug or as Plug&Play)

All technical information on the entire range at a glance.



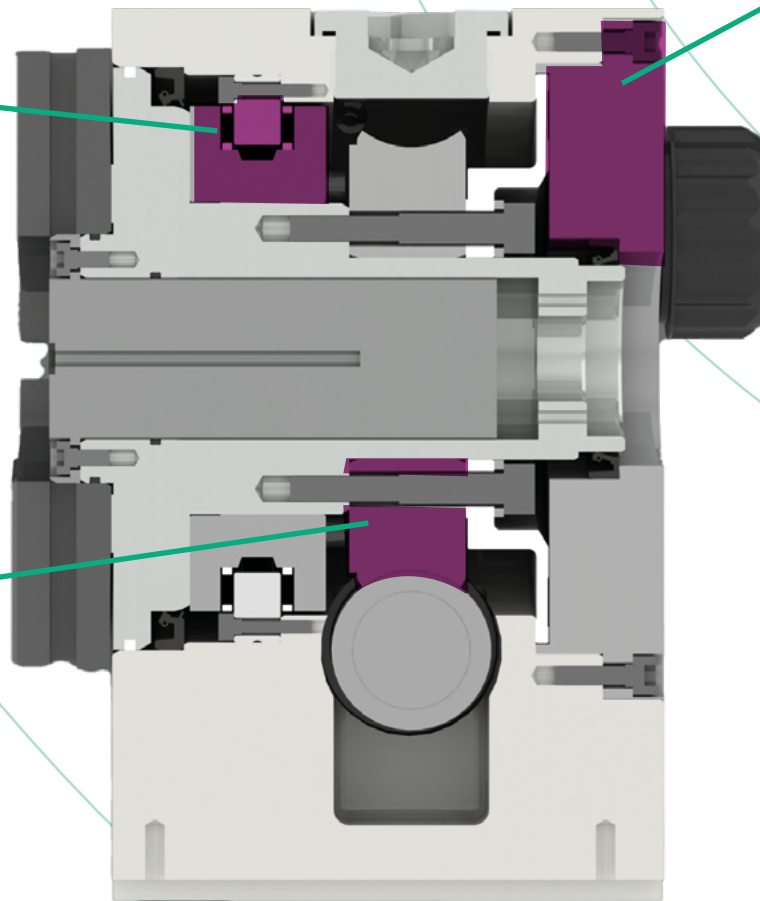
The inner values condensed to a maximally optimized installation space.

Bearing

Bearings close to the workpiece achieve higher stiffness, cutting performance and accuracy. The bearing arrangement is axially and radially combined with maximum diameter and maximum number of rolling elements.

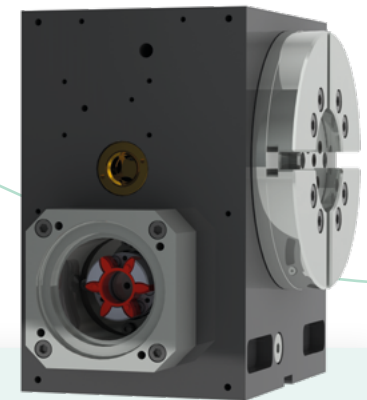
Drive

The ATCs use a high-performance worm gear drive for the transmission of maximum torques and speeds. Backlash-free adjustment & long service life.



Patented clamping

Peiseler clamps are the benchmark in power density and have already proven their reliability in over 60,000 devices.



Spotlight:

Connection of servomotors

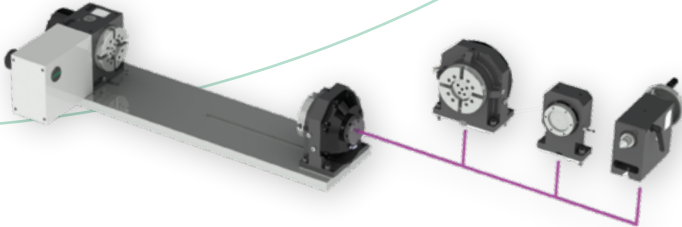
- ✔ Flexible coupling for better controllability
- ✔ Flexible interface to common servo motor manufacturers
- ✔ Simple installation

Can be combined with established assemblies.

The modular “building block” system of the ATC series enables flexible use and combinations - naturally always under the premise of making maximum efficient use of installation space.

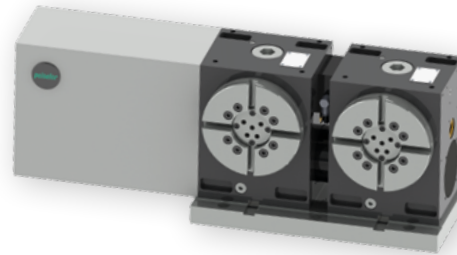
WTC

ATC turning device with counter bearing of your choice



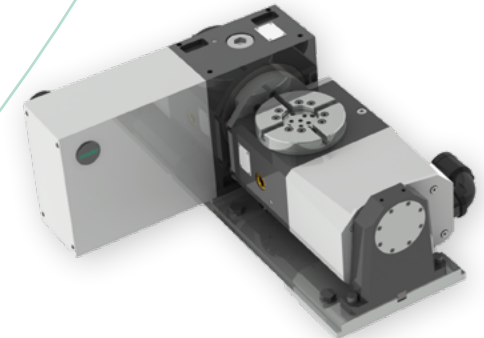
ATC-2

Parallel twin with common substructure & servo motor



ZATC

Two-axis swivel device



Performance is in the detail, not in the name.

At first glance:

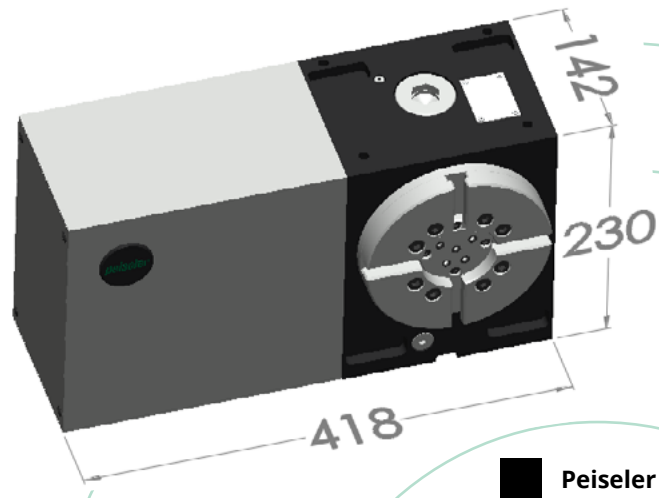
- ≡ same size designation
- ≡ competitor's product may be cheaper

At second glance:

- + Technical values not comparable
- + Quality of components not comparable

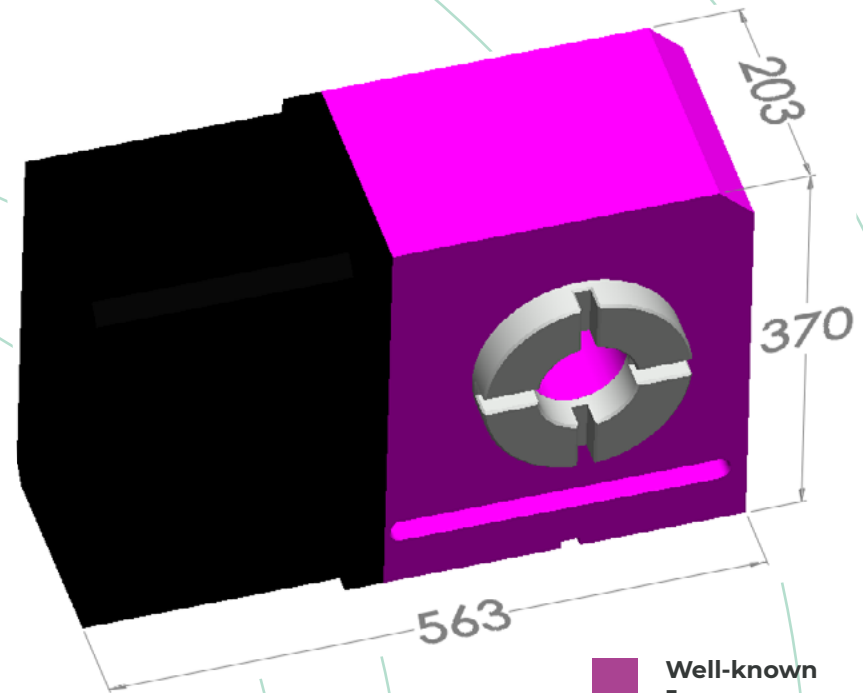
Catalog values	Peiseler construction size 160	Competition construction size 160 *	Benefit Peiseler	Catalog values	Peiseler construction size 300	Competition construction size 320 *	Benefit Peiseler
Transport load	160 kg	100 kg	+60 %	Transport load	400 kg	175 kg	+128 %
Speed	100 U/min	41,6 U/min	+140 %	Speed	50 U/min	25 U/min	+100 %
Part accuracy	11 "	25 "	+56 %	Part accuracy	10 "	20 "	+50 %
Tilting moment	1.000 Nm	780 Nm	+28 %	Tilting moment	20 kgm ²	4,48 kgm ²	+346 %
Clamping torque	1.000 Nm	500 Nm	+100 %	Driving torque	1.280 Nm	939 Nm	+36 %
	We have simply taken the measurements here!			Clamping torque	2.500 Nm	1.500 Nm	+66 %
Clamping torque	1.700 Nm	370 Nm	+359 %				

Our clamping systems hold! ... more than others promise.



■ Peiseler

This size comparison clearly shows that an appliance with comparable technical values takes up **209% more volume in your machine room!**



■ Well-known Japanese manufacturer

When you buy from Peiseler, you buy:

- ✓ Usually 1-2 numbers more compact devices in terms of performance
- ✓ A cheaper device
- ✓ Higher quality components
- ✓ More durability

Conclusion:

If you **compare performance**, you will find that you often need a larger appliance elsewhere - which is more expensive and takes more space.

peiseler

peiseler GmbH & Co. KG

Morsbachtalstraße 1 u. 3

42855 Remscheid



**Discover the ATC
series online**

**Interested?
Contact us now!**

peiseler GmbH & Co. KG

 +49 (0) 2191 9130

 vertrieb@peiseler.de